

# Customer Information Sheet

DRAWING No.: S7041-42R

SHEET 2 OF 2

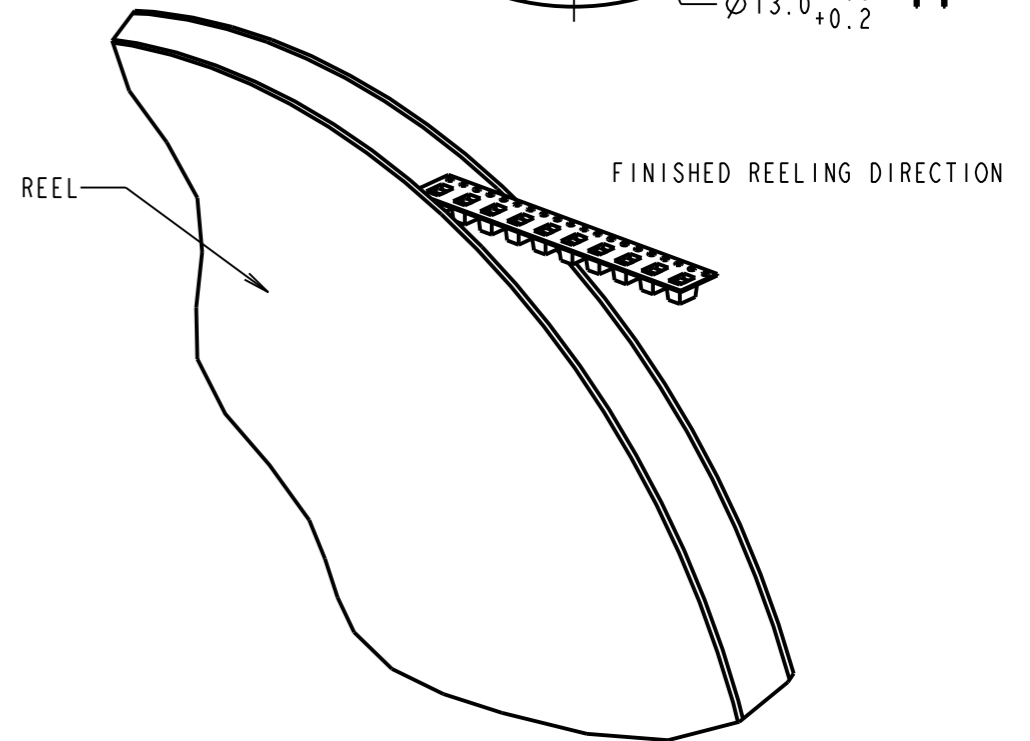
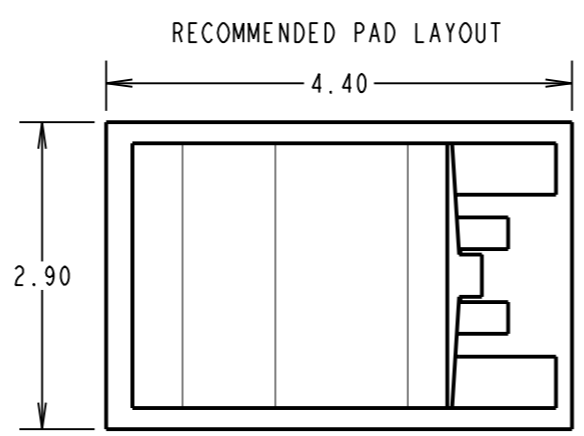
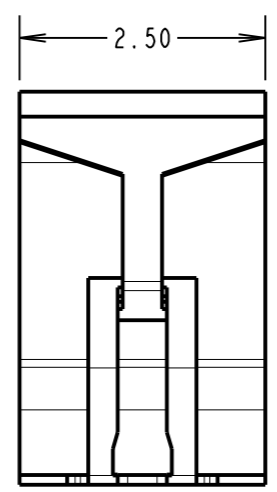
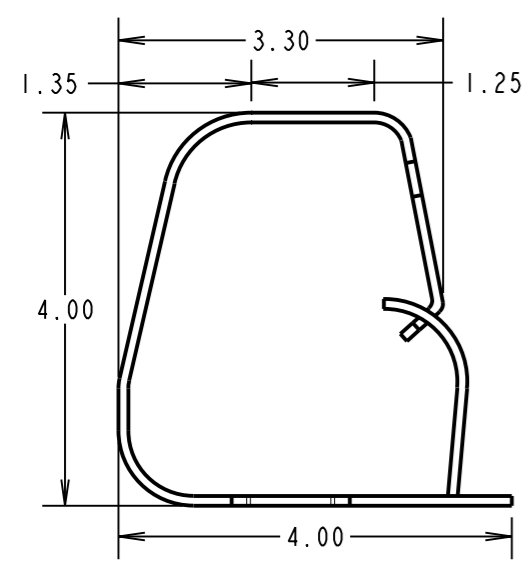
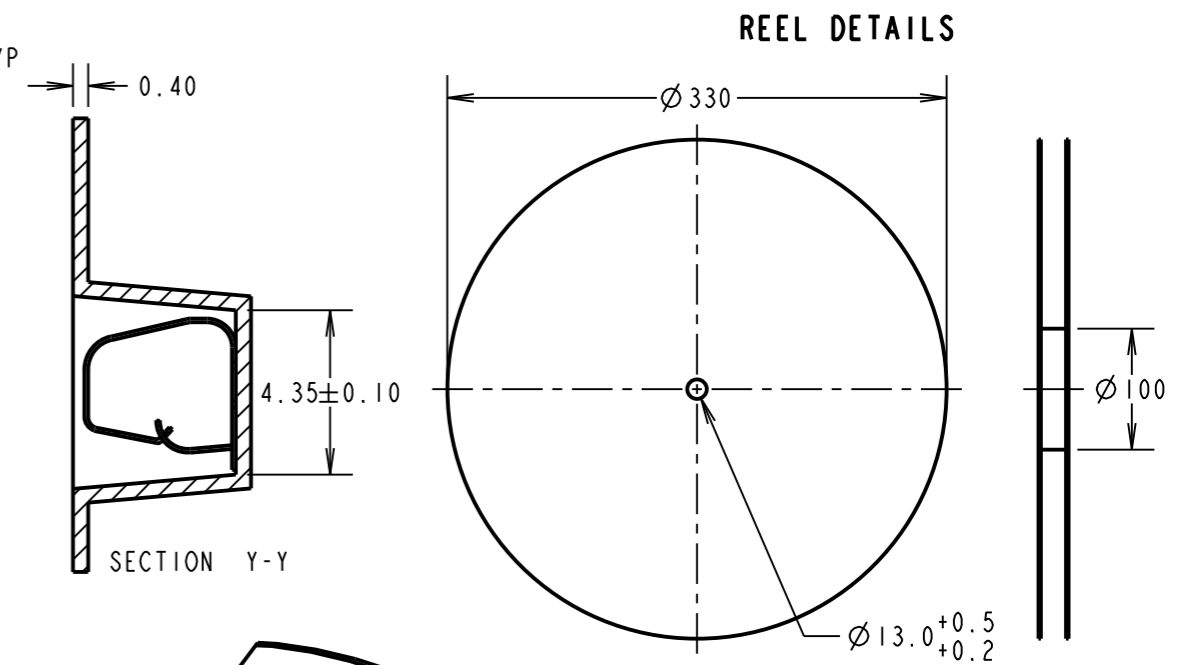
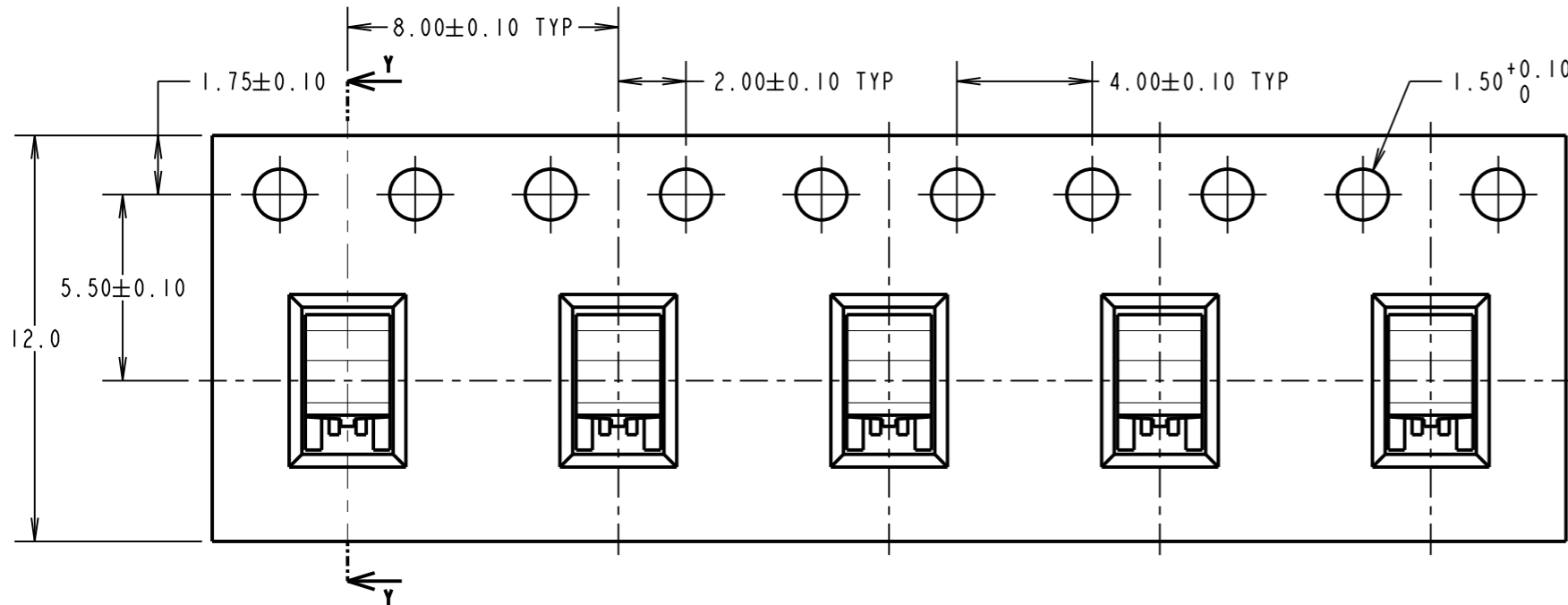
IF IN DOUBT - ASK

©

NOT TO SCALE

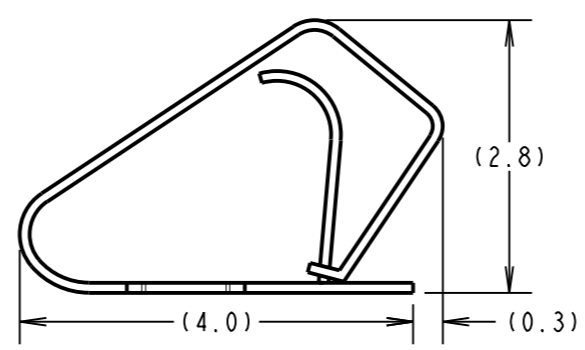
THIRD ANGLE PROJECTION

ALL DIMENSIONS IN mm



COMPONENT DETAILS

COMPONENT AT MINIMUM RECOMMENDED HEIGHT



**COMPONENT SPECIFICATION**  
 MATERIAL = TITANIUM COPPER ALLOY,  
 0.10mm THICK  
 FINISH = 0.7µ-1.3µ NICKEL, GOLD FLASH  
 ON CONTACT AND 2.54µ MIN 100%  
 MATTE TIN ON FOOT AREA.  
 RECOMMENDED WORKING HEIGHT = 3.40mm / MIN FORCE OF 1.2N  
 RECOMMENDED MINIMUM WORKING HEIGHT = 2.80mm

- NOTES:  
 1. QUANTITY PER REEL = 2000  
 2. THIS PRODUCT IS TAPED AND REELED IN ACCORDANCE WITH EIA-481. (ELECTRONIC INDUSTRIES ASSOCIATION).  
 3. ALL TOLERANCES ARE: X.X = ±0.30mm  
 X.XX = ±0.15mm  
 UNLESS OTHERWISE STATED.

|                |      |           |        |
|----------------|------|-----------|--------|
| SB             | 4    | 07.03.12  | 11655  |
| NAME           | ISS. | DATE      | C/NOTE |
| APPROVED:      |      | S.BENNETT |        |
| CHECKED:       |      | S.FLOWER  |        |
| DRAWN:         |      | R.ADDE    |        |
| CUSTOMER REF.: |      |           |        |
| ASSEMBLY DRG:  |      |           |        |

|  |   |   |   |  |               |
|--|---|---|---|--|---------------|
| <br>www.harwin.com<br>technical@harwin.com | THIS DRAWING AND ANY INFORMATION OR DESCRIPTIVE MATTER SET OUT HEREON ARE CONFIDENTIAL AND COPYRIGHT PROPERTY OF THE HARWIN GROUP AND MUST NOT BE DISCLOSED, LOANED, COPIED OR USED FOR MANUFACTURING, TENDERING OR FOR ANY OTHER PURPOSE WITHOUT THEIR WRITTEN PERMISSION. | TOLERANCES<br>X = ±1mm<br>X.X = ±0.25mm<br>X.XX = ±0.10mm<br>X.XXX = ±0.01mm<br>ANGLES = ±5°<br>UNLESS STATED | MATERIAL: SEE ABOVE<br>FINISH: SEE ABOVE<br>S/AREA: mm <sup>2</sup> | TITLE:<br>SMT SHIELD FINGER (4mm)<br>IN TAPE AND REEL<br>DRAWING NUMBER:<br><b>S7041-42R</b> | SHT<br>2 OF 2 |
|  |   | S7041-42R   |   |  |               |