

# Customer Information Sheet

DRAWING No.: S7061-42R

SHEET 2 OF 2

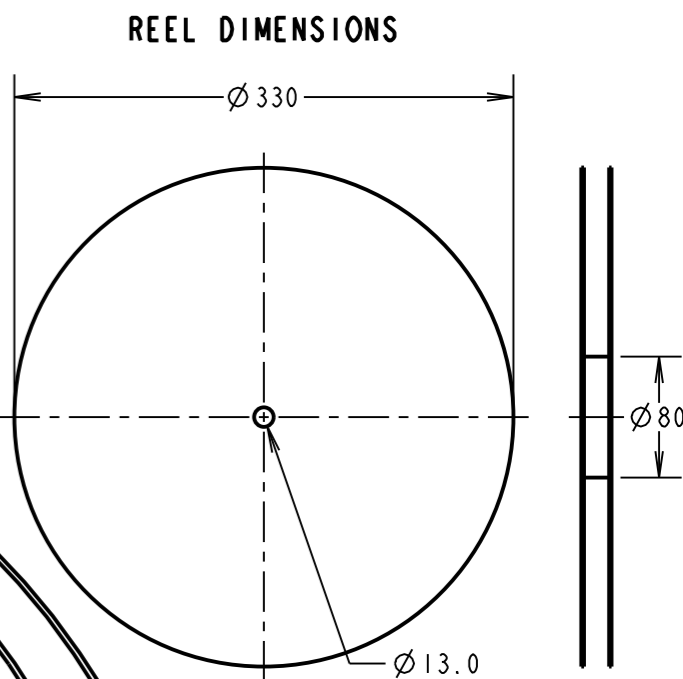
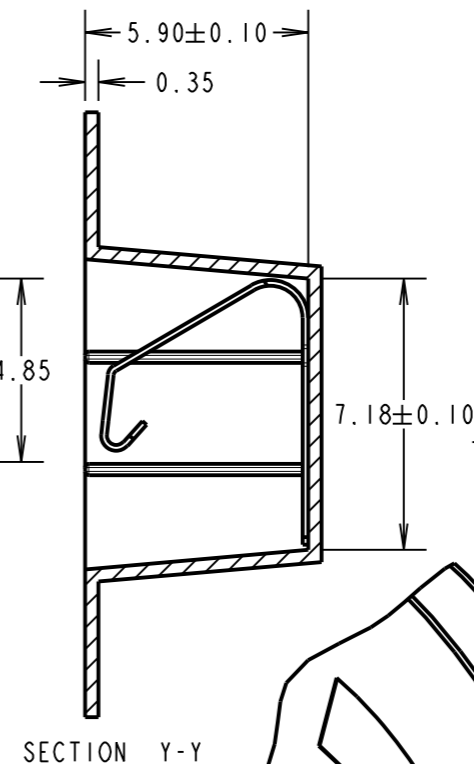
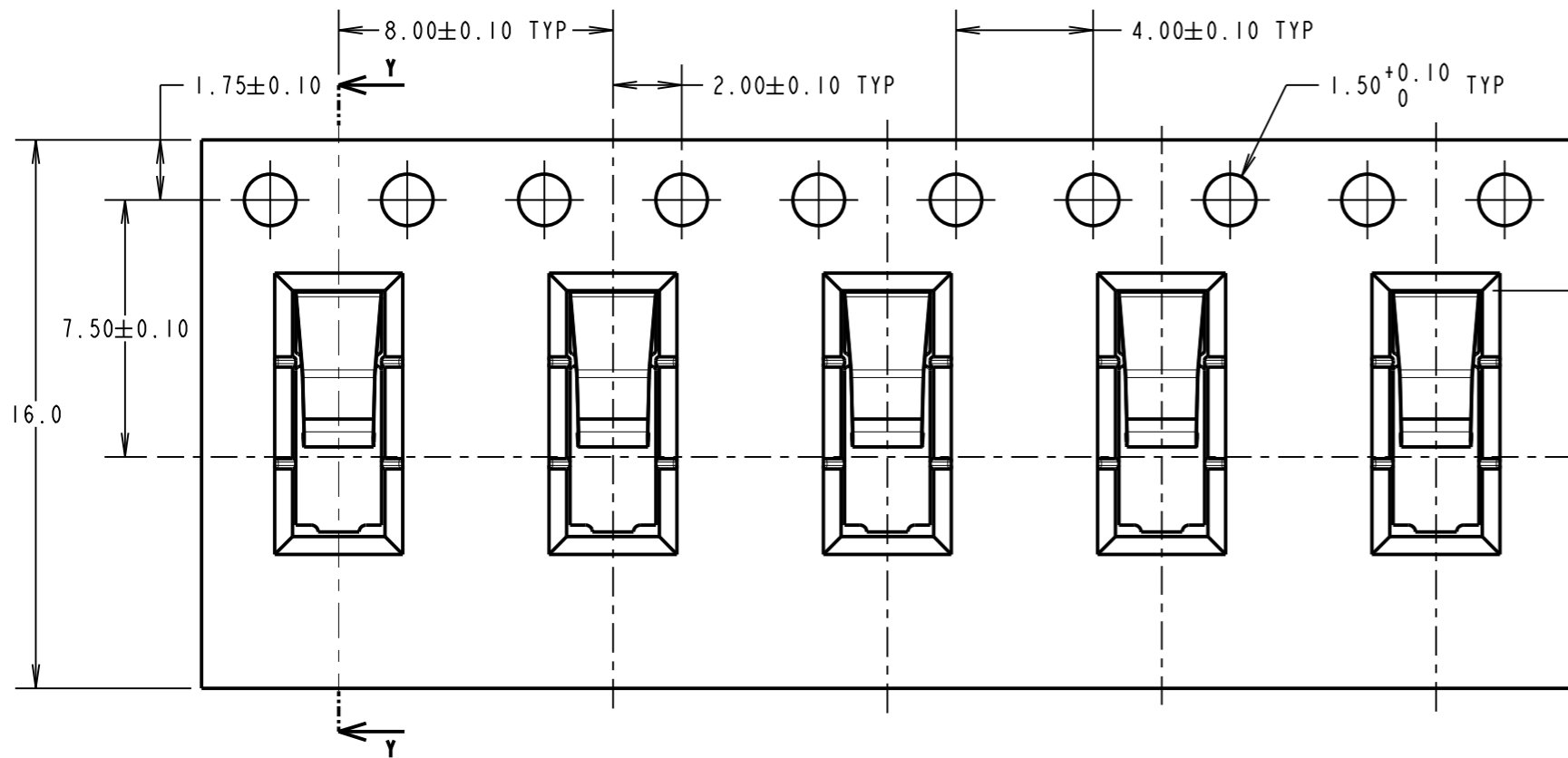
IF IN DOUBT - ASK

©

NOT TO SCALE

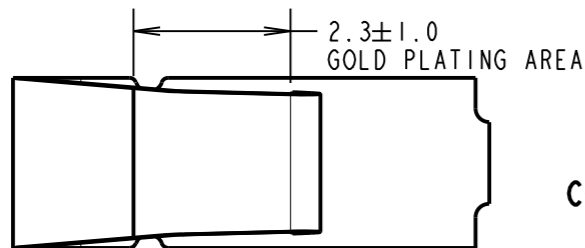
THIRD ANGLE PROJECTION

ALL DIMENSIONS IN mm



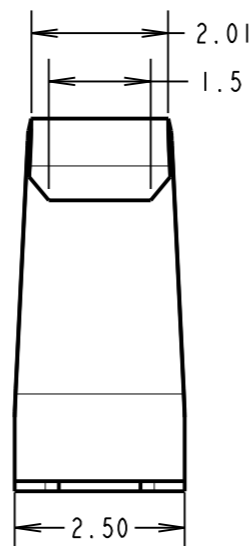
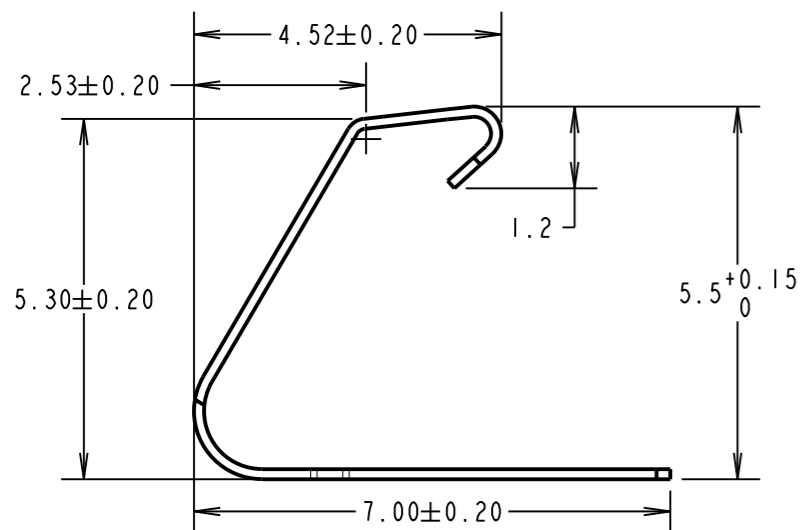
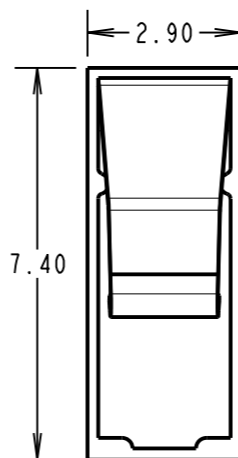
SECTION Y-Y

FINISHED REELING DIRECTION



COMPONENT DETAILS

RECOMMENDED PAD LAYOUT



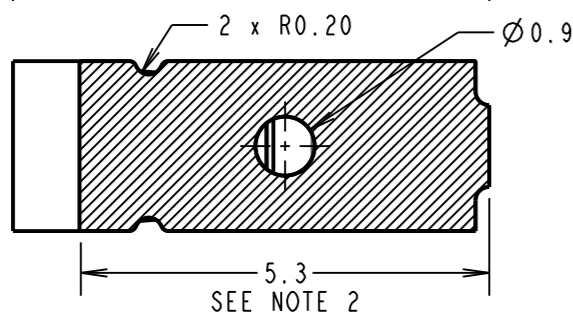
**COMPONENT SPECIFICATION**

MATERIAL = TITANIUM COPPER ALLOY,  
0.15mm THICK  
FINISH = 0.7µ-1.3µ NICKEL, GOLD FLASH  
ON CONTACT AND 2.54µ MIN 100%  
MATTE TIN ON FOOT AREA.  
RECOMMENDED WORKING HEIGHT = 4.60mm / MIN FORCE = 1.2N  
RECOMMENDED MINIMUM WORKING HEIGHT = 4.10mm

**NOTES:**

1. QUANTITY PER REEL = 1500
2. AREA FOR MATTE TIN PLATE
3. ALL TOLERANCES ARE: X.X = ±0.30mm  
X.XX = ±0.15mm  
UNLESS OTHERWISE STATED.

SB	4	07.03.12	11655
NAME	ISS.	DATE	C/NOTE
APPROVED:		S.BENNETT	
CHECKED:		S.FLOWER	
DRAWN:		R.ADDE	
CUSTOMER REF.:			
ASSEMBLY DRG:			



SEE NOTE 2

**HARWIN**

www.harwin.com  
technical@harwin.com

THIS DRAWING AND ANY INFORMATION OR DESCRIPTIVE MATTER SET OUT HEREON ARE CONFIDENTIAL AND COPYRIGHT PROPERTY OF THE HARWIN GROUP AND MUST NOT BE DISCLOSED, LOANED, COPIED OR USED FOR MANUFACTURING, TENDERING OR FOR ANY OTHER PURPOSE WITHOUT THEIR WRITTEN PERMISSION.

**TOLERANCES**  
X = ±1mm  
X.X = ±0.25mm  
X.XX = ±0.10mm  
X.XXX = ±0.01mm  
ANGLES = ±5°  
UNLESS STATED

**MATERIAL:**  
SEE ABOVE  
**FINISH:** SEE ABOVE  
**S/AREA:** mm<sup>2</sup>

**TITLE:**  
SMT SHIELD FINGER (5.5mm)  
IN TAPE AND REEL  
**DRAWING NUMBER:**  
S7061-42R  
SHT 2 OF 2