

# "High Frequency Ceramic Solutions"

## 5400 MHz Balun

P/N 5400BL15B200

Detail Specification: 09/14/06

Page 1 of 2

### General Specifications

Part Number	5400BL15B200
Frequency (MHz)	4900 ~ 5875
Unbalanced Impedance	50 $\Omega$
Balanced Impedance	200 $\Omega$
Insertion Loss	1.0 dB max.
Return Loss	9.5 dB min.

Phase Difference	180° $\pm$ 10
Amplitude Difference	2.0 dB max.
Operating Temperature	-40 to +85°C
Reel Quantity	4,000
Power Capacity	3 watts max.

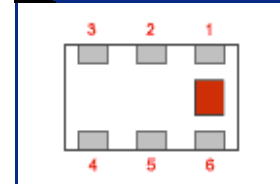
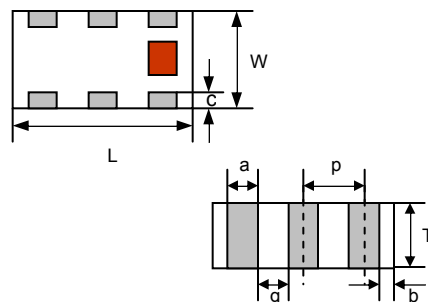
P/N Suffix	Packaging Style	Bulk	Suffix = S	Eg. 5400BL15B200S
		T & R	Suffix = E	Eg. 5400BL15B200E
	Termination Style	100% Tin	Suffix = None	Eg. 5400BL15B200(E or S)
		Tin / Lead	Please consult Factory	

### Terminal Configuration

No.	Function
1	Unbalanced Port
2	GND
3	Balanced Port
4	Balanced Port
5	GND
6	NC

### Mechanical Dimensions

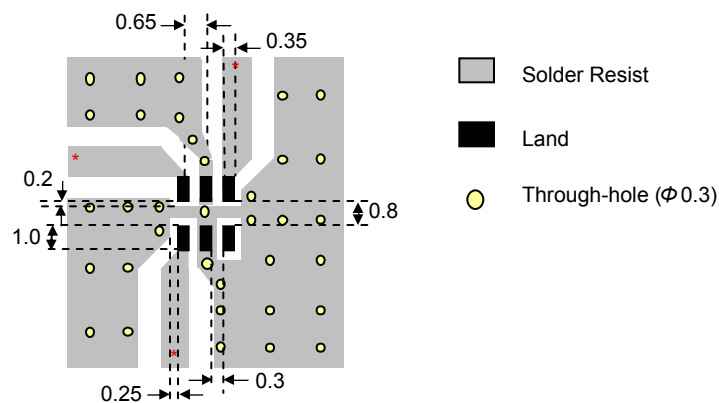
	In	mm
L	0.079 $\pm$ 0.004	2.00 $\pm$ 0.10
W	0.049 $\pm$ 0.004	1.25 $\pm$ 0.10
T	0.035 $\pm$ 0.004	0.90 $\pm$ 0.10
a	0.012 $\pm$ 0.004	0.30 $\pm$ 0.10
b	0.008 $\pm$ 0.004	0.20 $\pm$ 0.10
c	0.012 $+0.004/-0.008$	0.30 $+0.1/-0.2$
g	0.014 $\pm$ 0.004	0.35 $\pm$ 0.10
p	0.026 $\pm$ 0.002	0.65 $\pm$ 0.05



### Mounting Considerations

Mount these devices with brown mark facing up.

\* Line width should be designed to match 50  $\Omega$  characteristic impedance, depending on PCB material and thickness.



Units: mm

Johanson Technology, Inc. reserves the right to make design changes without notice.  
All sales are subject to Johanson Technology, Inc. terms and conditions.



[www.johansontechnology.com](http://www.johansontechnology.com)

931 Via Alondra • Camarillo, CA 93012 • TEL 805.389.1166 FAX 805.389.1821

2003 Johanson Technology, Inc. All Rights Reserved

# "High Frequency Ceramic Solutions"

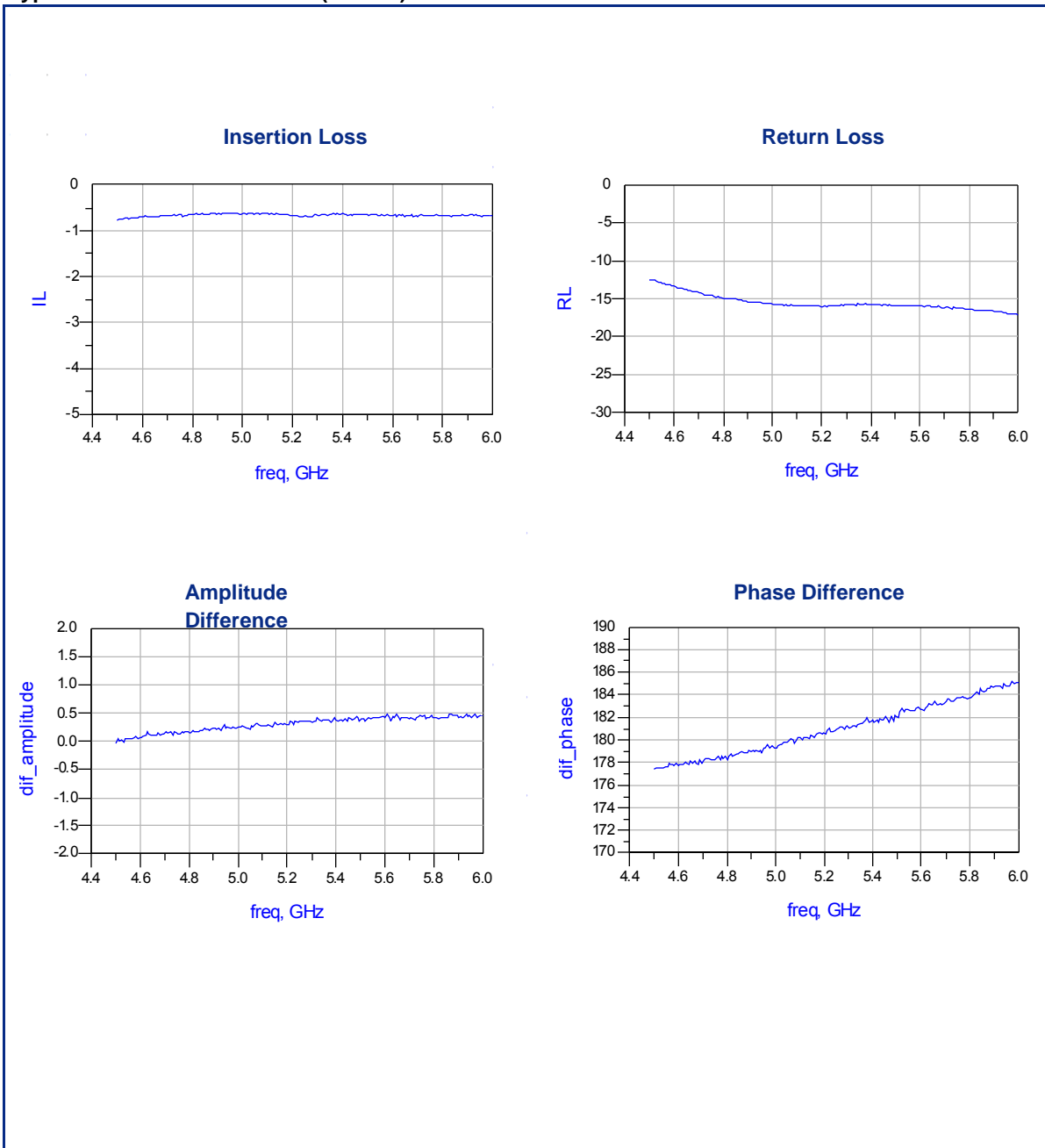
5400 MHz Balun

P/N 5400BL15B200

Detail Specification: 09/14/06

Page 2 of 2

## Typical Electrical Performance (T=25°C)



Johanson Technology, Inc. reserves the right to make design changes without notice.

All sales are subject to Johanson Technology, Inc. terms and conditions.



[www.johansontechnology.com](http://www.johansontechnology.com)

931 Via Alondra • Camarillo, CA 93012 • TEL 805.389.1166 FAX 805.389.1821

2003 Johanson Technology, Inc. All Rights Reserved