

Customer Information Sheet

DRAWING No.: S7071-46R

SHEET 2 OF 2

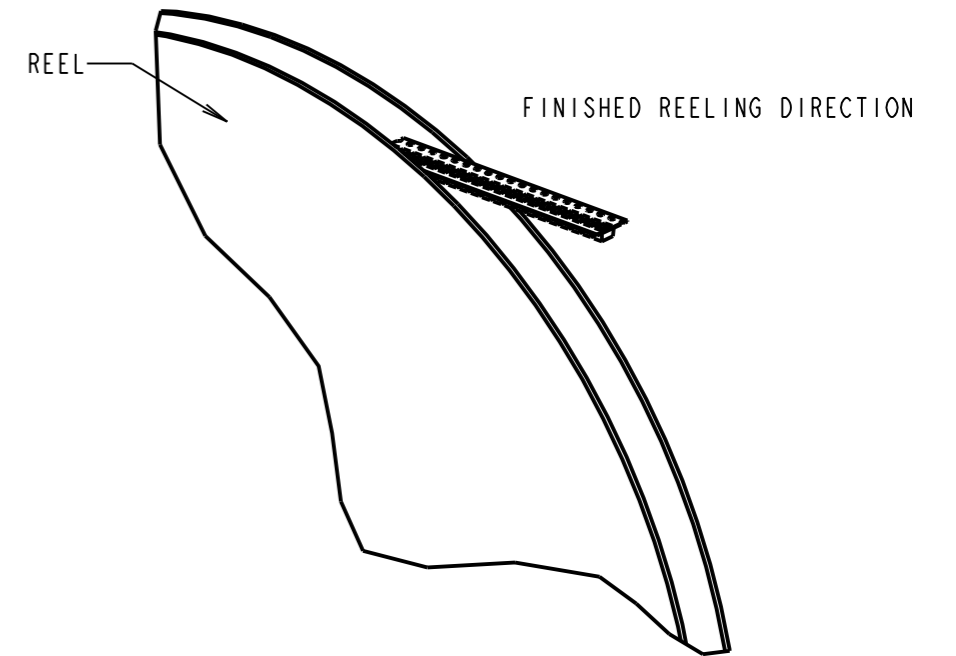
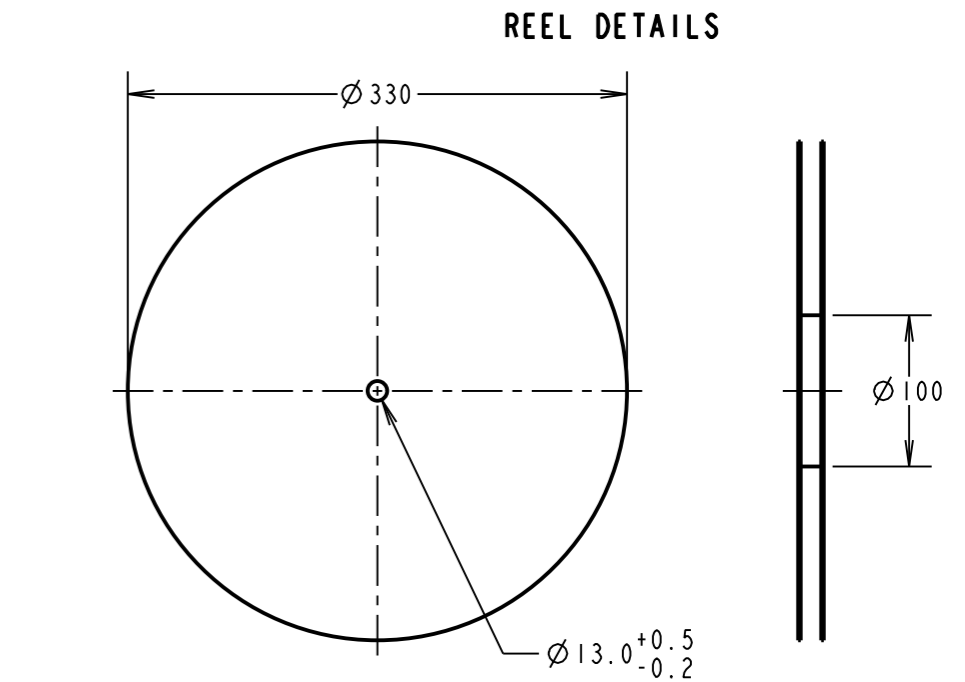
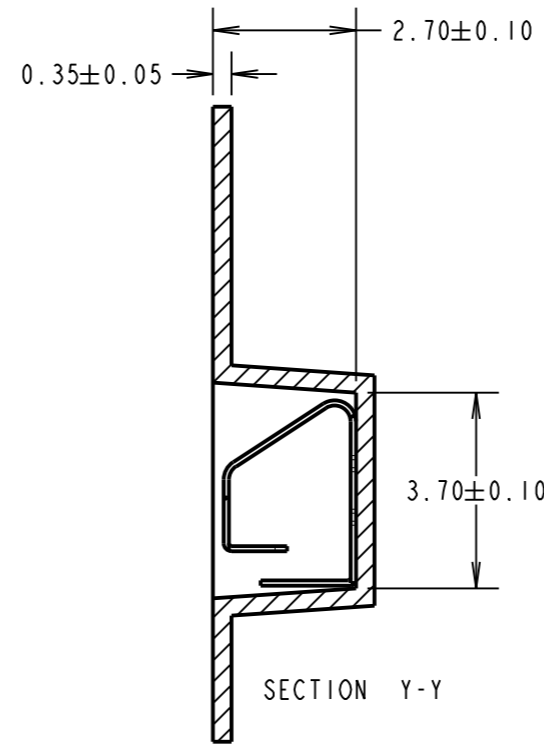
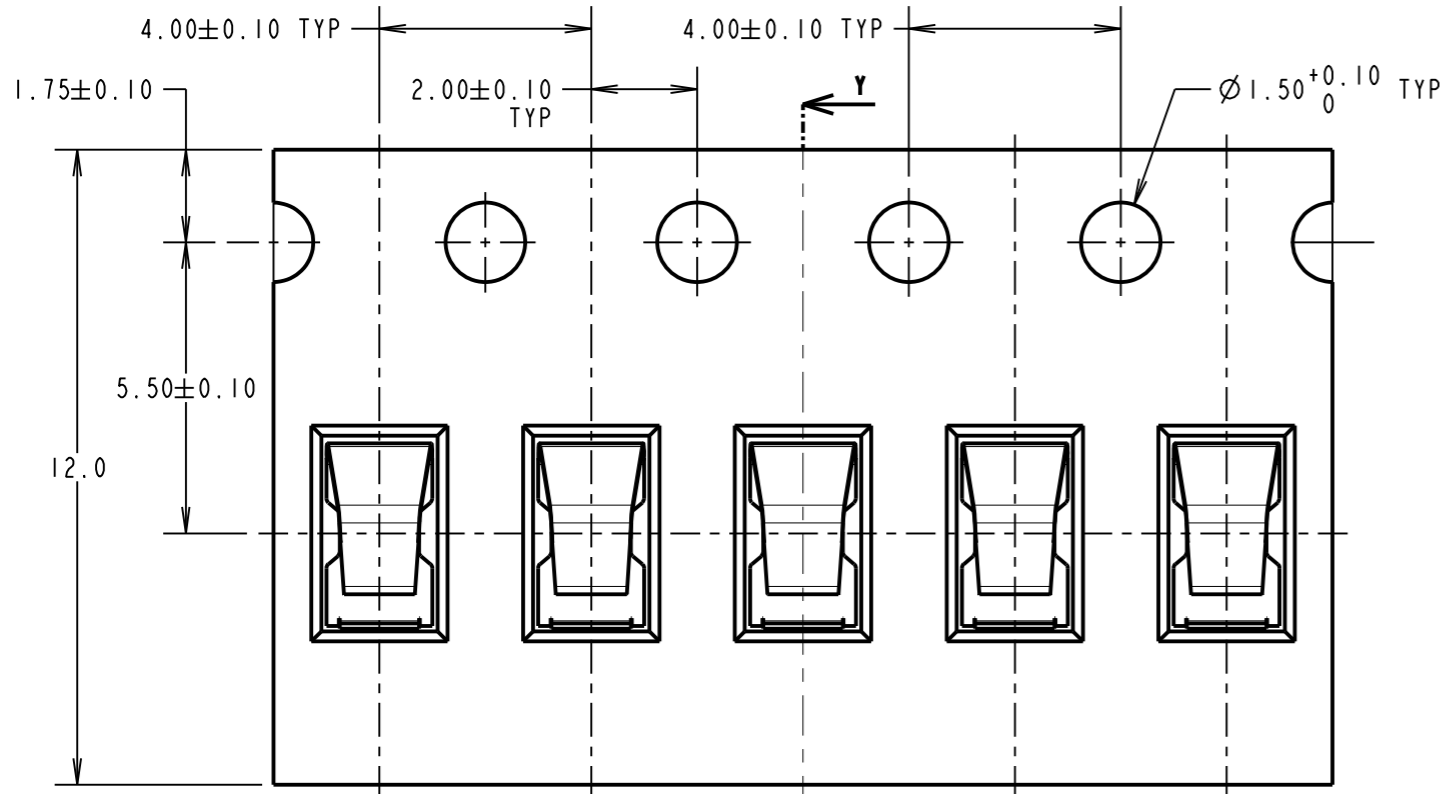
IF IN DOUBT - ASK

©

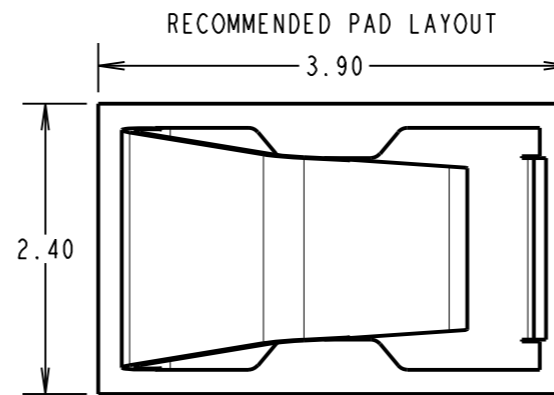
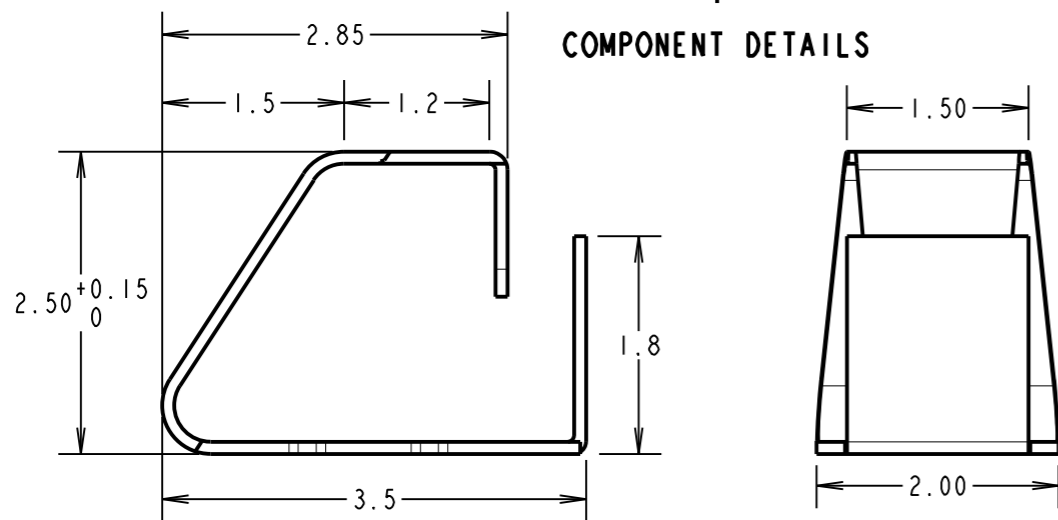
NOT TO SCALE

THIRD ANGLE PROJECTION

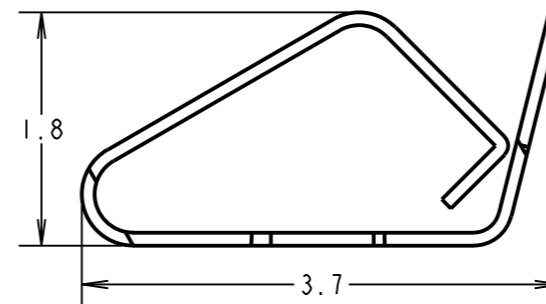
ALL DIMENSIONS IN mm



COMPONENT DETAILS



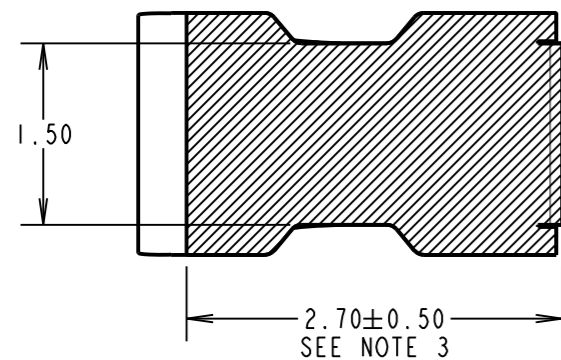
COMPONENT AT MINIMUM RECOMMENDED HEIGHT



COMPONENT SPECIFICATION
 MATERIAL = TITANIUM COPPER ALLOY,
 0.10mm THICK
 FINISH = 0.7µ-1.3µ NICKEL ALL OVER,
 2.54µ MIN 100% MATTE TIN ON
 FOOT AREA.
 RECOMMENDED WORKING HEIGHT = 2.10mm / MIN FORCE = 1.2N
 RECOMMENDED MINIMUM WORKING HEIGHT = 1.80mm

- NOTES:**
1. QUANTITY PER REEL = 6000
 2. THIS PRODUCT IS TAPED AND REELED IN ACCORDANCE WITH EIA-481. (ELECTRONIC INDUSTRIES ASSOCIATION).
 3. AREA FOR MATTE TIN PLATE.
 4. ALL TOLERANCES ARE: X.X = ±0.30mm
X.XX = ±0.15mm
UNLESS OTHERWISE STATED.

SB	4	07.03.12	11655
NAME	ISS.	DATE	C/NOTE
APPROVED:		S.BENNETT	
CHECKED:		S.FLOWER	
DRAWN:		R.ADDE	
CUSTOMER REF.:			
ASSEMBLY DRG:			



HARWIN

www.harwin.com
 technical@harwin.com

THIS DRAWING AND ANY INFORMATION OR DESCRIPTIVE MATTER SET OUT HEREON ARE CONFIDENTIAL AND COPYRIGHT PROPERTY OF THE HARWIN GROUP AND MUST NOT BE DISCLOSED, LOANED, COPIED OR USED FOR MANUFACTURING, TENDERING OR FOR ANY OTHER PURPOSE WITHOUT THEIR WRITTEN PERMISSION.

TOLERANCES
 X = ±1mm
 X.X = ±0.25mm
 X.XX = ±0.10mm
 X.XXX = ±0.01mm
 ANGLES = ±5°
 UNLESS STATED

MATERIAL: SEE ABOVE
FINISH: SEE ABOVE
S/AREA: mm²

TITLE: SMT SHIELD FINGER (2.5mm) IN TAPE AND REEL

DRAWING NUMBER: S7071-46R

SHT 2 OF 2