

Customer Information Sheet

DRAWING No.: S7051-42R

SHEET 2 OF 2

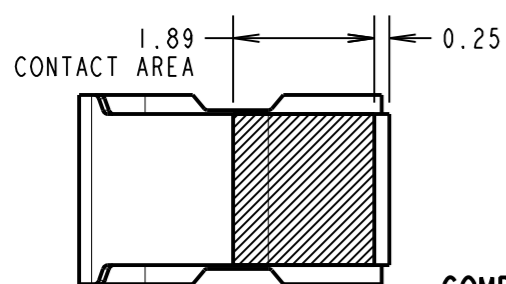
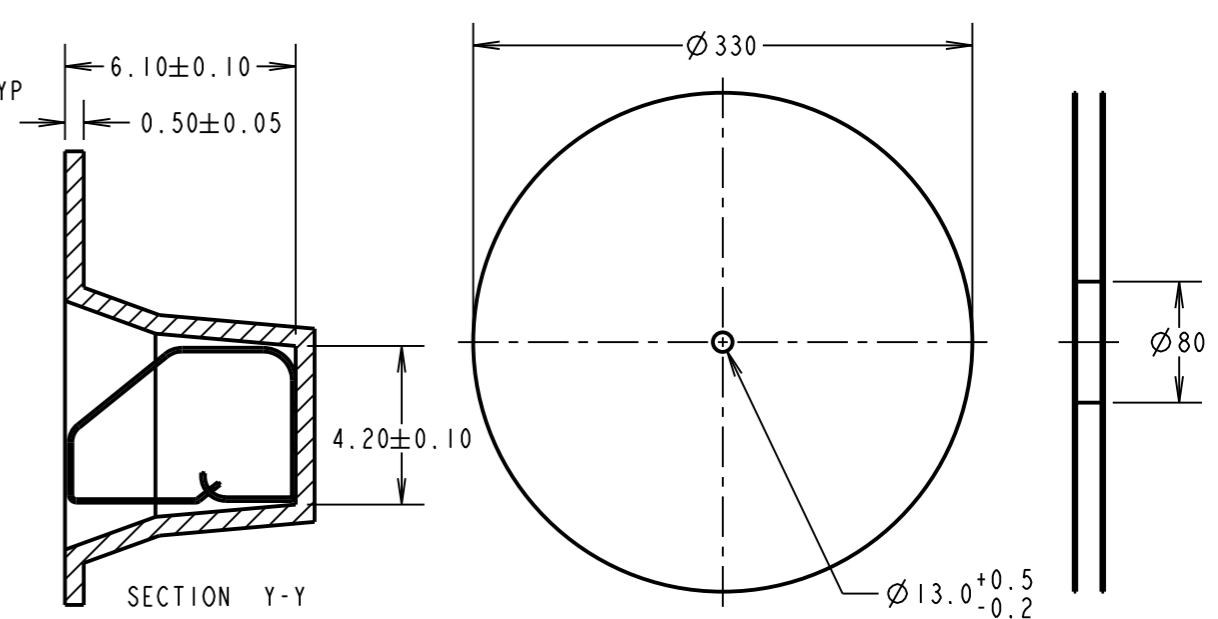
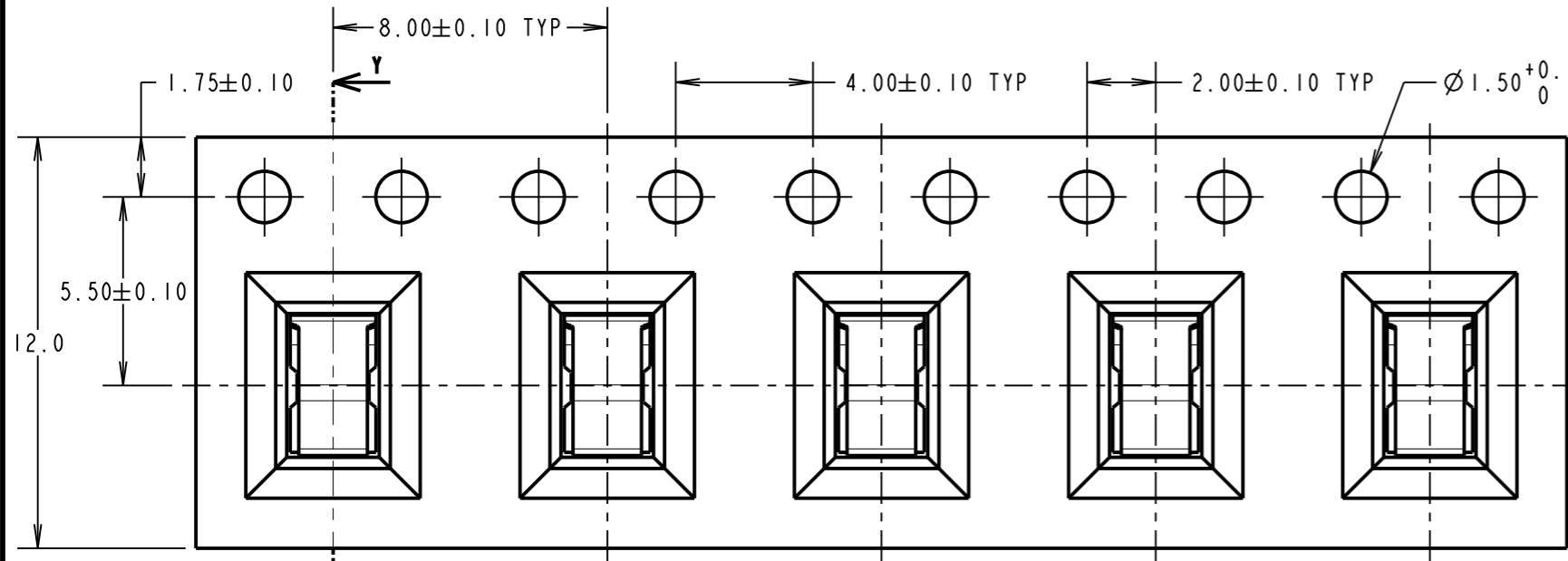
IF IN DOUBT - ASK

Ⓒ

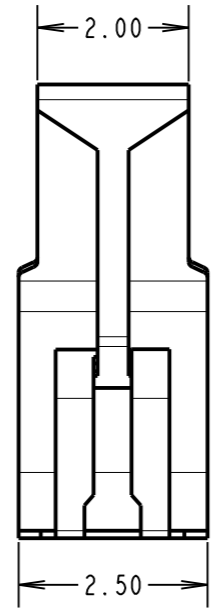
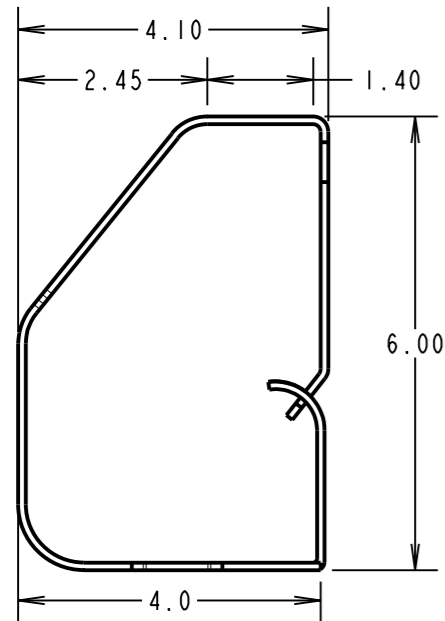
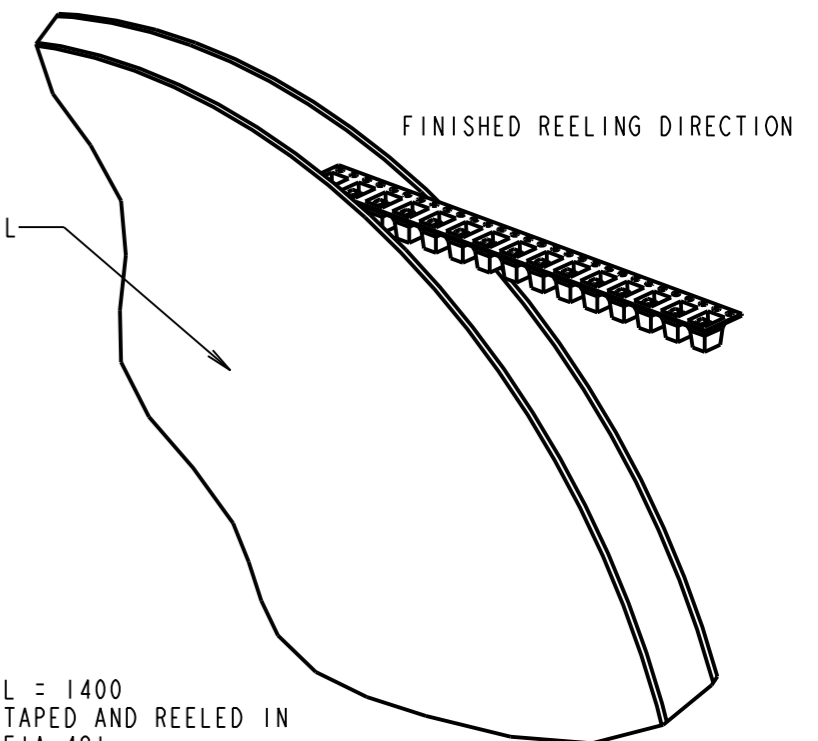
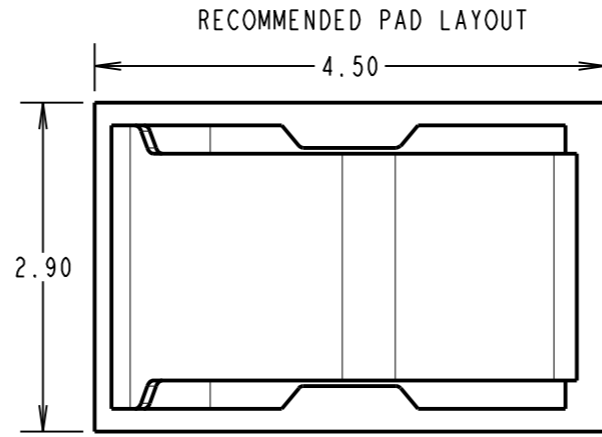
NOT TO SCALE

THIRD ANGLE PROJECTION

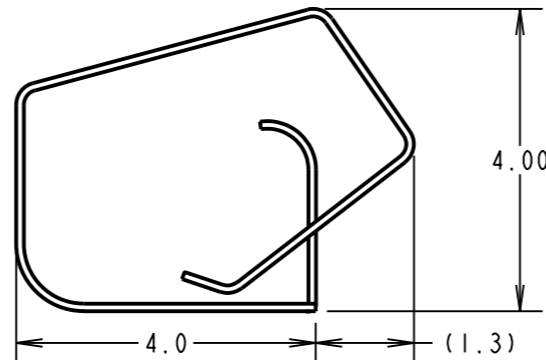
ALL DIMENSIONS IN mm



COMPONENT DETAILS



COMPONENT AT MINIMUM RECOMMENDED HEIGHT



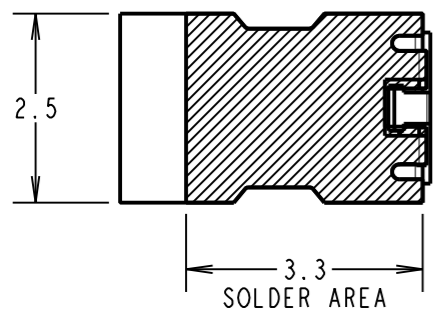
NOTES:

1. QUANTITY PER REEL = 1400
2. THIS PRODUCT IS TAPED AND REELED IN ACCORDANCE WITH EIA-481. (ELECTRONIC INDUSTRIES ASSOCIATION).
3. ALL TOLERANCES ARE: X.X = ±0.30mm
X.XX = ±0.15mm
UNLESS OTHERWISE STATED.

COMPONENT SPECIFICATION

MATERIAL = TITANIUM COPPER ALLOY, 0.10mm THICK
 FINISH = 0.7μ - 1.3μ NICKEL, GOLD FLASH ON CONTACT
 AND 2.54μ MIN 100% MATTE TIN ON FOOT AREA.
 RECOMMENDED WORKING HEIGHT = 4.50mm / MIN FORCE = 1.2N
 RECOMMENDED MINIMUM WORKING HEIGHT = 4.00mm

SB	4	07.03.12	11655
NAME	ISS.	DATE	C/NOTE
APPROVED:		S.BENNETT	
CHECKED:		S.FLOWER	
DRAWN:		R.ADDE	
CUSTOMER REF.:			
ASSEMBLY DRG:			



HARWIN

www.harwin.com
technical@harwin.com

THIS DRAWING AND ANY INFORMATION OR DESCRIPTIVE MATTER SET OUT HEREON ARE CONFIDENTIAL AND COPYRIGHT PROPERTY OF THE HARWIN GROUP AND MUST NOT BE DISCLOSED, LOANED, COPIED OR USED FOR MANUFACTURING, TENDERING OR FOR ANY OTHER PURPOSE WITHOUT THEIR WRITTEN PERMISSION.

TOLERANCES
 X = ±1mm
 X.X = ±0.25mm
 X.XX = ±0.10mm
 X.XXX = ±0.01mm
 ANGLES = ±5°
 UNLESS STATED

MATERIAL: SEE ABOVE
 FINISH: SEE ABOVE
 S/AREA: mm²

TITLE:
SMT SHIELD FINGER (6mm)
IN TAPE AND REEL
 DRAWING NUMBER:
S7051-42R
 SHT 2 OF 2