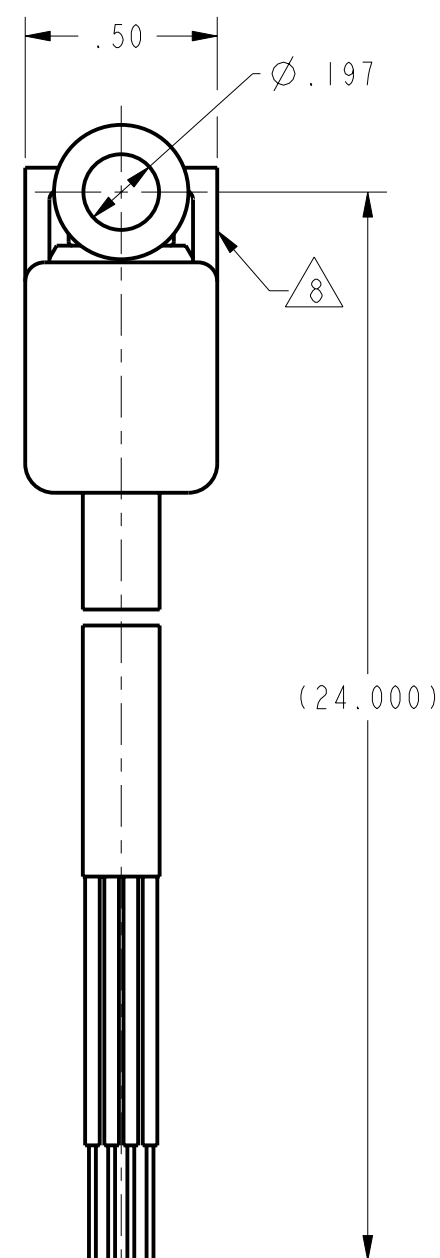
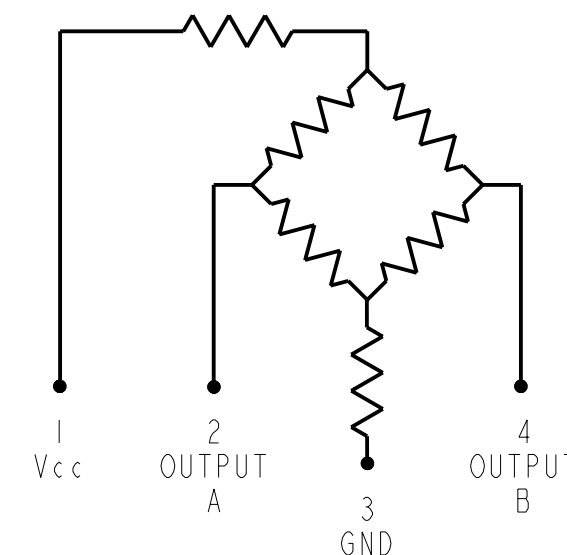


METRIC	INCHES
5,00	.197
8,00	.315
8,9	.35
9,1	.36
10,9	.43
12,7	.50
18,0	.71
58,9	2.32
609,60	.24.000



PIN 4 = OUTPUT, - (GREEN) — PIN 1 = V_s (RED)
 PIN 3 = GROUND, - (BLACK) — PIN 2 = OUTPUT, + (WHITE)

CIRCUIT DIAGRAM



OUTPUT "A"
 INCREASES AS P2
 PRESSURE INCREASES

OUTPUT "B"
 DECREASES AS P2
 PRESSURE INCREASES

GENERAL OPERATING CHARACTERISTICS (ELECTRICAL PERFORMANCE AT 10.00±0.01 VDC EXCITATION, 25°C)				
PRESSURE RANGE (PSI)	0-100			UNITS
	MIN	NOM	MAX	
SPAN (P2>P1) ¹	95	100	105	mV
NULL OFFSET	-2.0	0	+2.0	mV
		TYP	MAX	UNITS
LINEARITY (BFSL, P2>P1)		0.4	0.6	%SPAN
NULL SHIFT (0 TO 25°C, 25 TO 50°C) ²		±1.0	±2.0	mV
SPAN SHIFT (0 TO 25°C, 25 TO 50°C) P2>P1 ²		±0.5	±1.5	%SPAN
REPEATABILITY AND HYSTERESIS		±0.2		%SPAN
OVERPRESSURE (P2>P1; P1>P2)			200	PSI

ALL PRESSURE RANGE	MIN	TYP	MAX	UNITS
EXCITATION VOLTAGE		10	16	VDC
INPUT RESISTANCE	5.5K	7.5K	11.5K	OHMS
OUTPUT RESISTANCE	1.5K	2.5K	3.0K	OHMS
RESPONSE TIME			1.0	ms

TEMPERATURE RANGES	
STORAGE	-55°C TO +100°C (-67°F TO +212°F)
OPERATE	-40°C TO +85°C (-40°F TO +185°F)
COMPENSATED	0 TO +50°C (+32°F TO +122°F)

NOTES

- ¹ SPAN IS THE ALGEBRAIC DIFFERENCE BETWEEN OUTPUT AT MINIMUM RATED OPERATING PRESSURE AND OUTPUT AT 0 PSI
- ² TEMPERATURE ERROR IS CALCULATED WITH RESPECT TO 25°C
- 3 - INPUT MEDIA LIMITED ONLY TO THOSE MATERIALS THAT WILL NOT ATTACK SILICON, THE HOUSING MATERIAL OR SEAL MATERIAL
- 4 - SENSOR IS OPERATIONAL OVER VACUUM PRESSURE RANGE
- 5 - RATIO METRIC TO SUPPLY VOLTAGE
- 6 - LASER BRAND "6FF5G"
- 7 - PIN 1 IS IDENTIFIED BY THE RED WIRE
- ⁸ CATALOG LISTING AND DATE CODE HERE. CATALOG BRAND IS 6FF5G. ALTERNATE FORMAT OF CATALOG LISTING BRAND IS THE ENTIRE CATALOG LISTING

THIS DRAWING COVERS A PROPRIETARY ITEM AND IS THE PROPERTY OF MICRO SWITCH, A DIVISION OF HONEYWELL. THIS DRAWING IS NOT TO BE COPIED OR USED WITHOUT THE APPROVAL OF MICRO SWITCH.

MICRO SWITCH
 a Honeywell Division

BRIDGE PRESSURE SENSOR

CATALOG LISTING
26PCFFU5G

ANSI Y14.5M-1982 APPLIES
 FED. MFG. CODE 91929

THIRD ANGLE PROJECTION		
SCALE 2 : 1		
DO NOT SCALE PRINT		
UNLESS OTHERWISE SPECIFIED TOLERANCES ARE		
ONE PLACE	(.0)	±.030
TWO PLACES	(.00)	±.015
THREE PLACES	(.000)	±.005
ANGLES		±
WEIGHT		

P.T.C./CAD 30
 DRAWN
 TSM 25SEP01
 CHECK
 SAV 25SEP01
 CHECK
 26PCFFU5G
 DRAWING NUMBER
 2
 ISSUE
 2
 RELEASE NO. 202561
 PAGE 1 OF 1
 REPLACES